

GLOBAL MARKET		1D	YTD
DJI	26,815.44	0.20%	-6.04%
S&P500	3,246.59	0.30%	0.49%
NASDAQ	10,672.27	0.37%	18.94%
VIX	28.51	-0.24%	
FTSE 100	5,822.78	-1.30%	-22.80%
DAX	12,606.57	-0.29%	-4.85%
CAC40	4,762.62	-0.83%	-20.33%
Nikkei	23,087.82	-1.11%	-2.40%
Shanghai	3,223.18	-1.72%	4.52%
Kospi	2,272.70	-2.59%	3.41%
Hang Seng	23,311.07	-1.82%	-18.07%
STI (Singapore)	2,450.82	-1.22%	-23.96%
SET (Thailand)	1,247.46	-1.31%	-21.93%
Crude oil (\$/barrel)	40.25	1.69%	-33.74%
Gold (\$/ounce)	1,871.60	0.25%	23.32%

Stocks whipsawed as investors weighed the chances of a compromise on a new stimulus package amid concern over an uptick in global coronavirus cases. The dollar fell.

The S&P 500 pared most of its earlier rally after optimism faded that Congress would reach a spending deal with the White House. Stocks surged midday on news that Treasury Secretary Steven Mnuchin and the Democratic House leader were open to fresh talks. But a report that Speaker Nancy Pelosi's fresh overture deviated only slightly from previous offers sparked concern that the two sides would remain far apart. The stock gauge still closed above a key support level: Its average price of the past 100 days.

Asian stocks looked set for tentative gains.

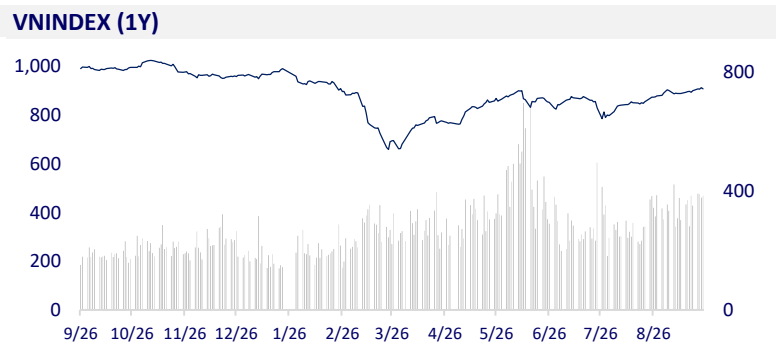
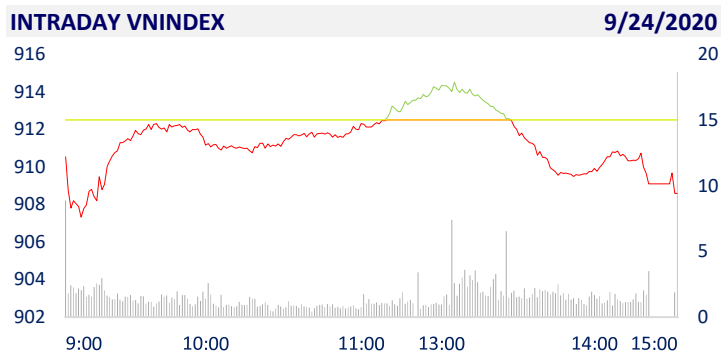
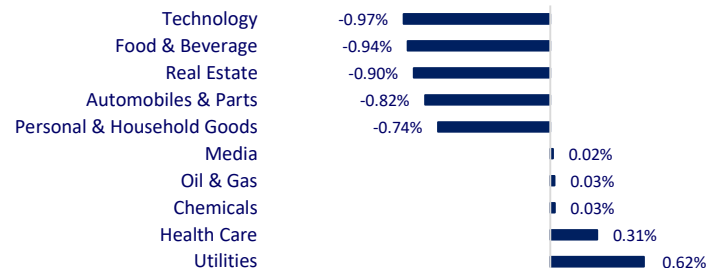
VIETNAM ECONOMY		1D (bps)	YTD (bps)
Vnibor	0.11%	0	-132
Deposit interest 12M	6.00%	0	-50
5 year-Gov. Bond	1.49%	8	-250
10 year-Gov. Bond	2.43%	-26	-227
USD/VND	23,288	0.04%	0.25%
EUR/VND	27,716	-0.14%	4.19%
CNY/VND	3,433	-0.17%	1.09%

Ho Chi Minh City aims to become an economic and financial center of Asia and an attractive global destination by 2045 with a per capita income of 40,000 USD. Estimated income per capita in 2030 is 12,570 USD, belongs to the high-income group, Ho Chi Minh City will become the economic, financial, science and technology center of Southeast Asia.

VIETNAM STOCK MARKET		1D	YTD
VN-INDEX	908.58	-0.43%	-5.45%
VN30	853.21	-0.59%	-2.94%
HNX	131.71	-0.70%	28.49%
UPCOM	61.00	0.07%	7.87%
Net Foreign buy (B)	-148.14		
Total trading value (B)	7,534.74	-1.55%	115.28%

Foreign investors turned to be net sellers again after 3 net buying sessions with the value of over 148 billion dong, strong selling focused on HPG, POW, DXG, E1VFN30 and PMC. On the contrary, they were net buyers with MBB, FUSSVFL and HSG. At the end, the VN-Index dropped nearly 4 points to 908.5, the HNX-Index dropped by nearly 1 point to nearly 132 points.

ETF & DERIVATIVES		1D	YTD
FUSSV50	12,500	-0.79%	-1.19%
E1VFN30	14,300	-0.56%	-3.12%
VN30F2103	843.8	-0.26%	
VN30F2012	848.0	-0.24%	
VN30F2011	849.8	-0.22%	
VN30F2010	853.1	-0.12%	

CHANGE IN PRICE BY SECTOR

EVENT CALENDER

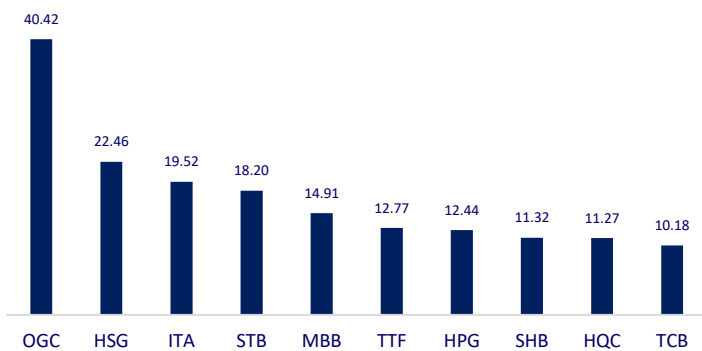
Ticker	Ex-right Date	Last register Date	Exercise Date	Type	Rate	Value
DIH	9/25/2020	9/28/2020	10/28/2020	Cash		300
BTS	9/25/2020	9/28/2020		Stock	100:3	
CRE	9/25/2020	9/28/2020	10/28/2020	Cash		1,000
CNG	9/29/2020	9/30/2020	10/23/2020	Cash		1,500
DNP	9/29/2020	9/30/2020		Stock	10:1	
VNM	9/29/2020	9/30/2020	10/15/2020	Cash & Stock	5:1	2,000
HDB	10/1/2020	10/2/2020		Stock	100:15	

SELECTED NEWS

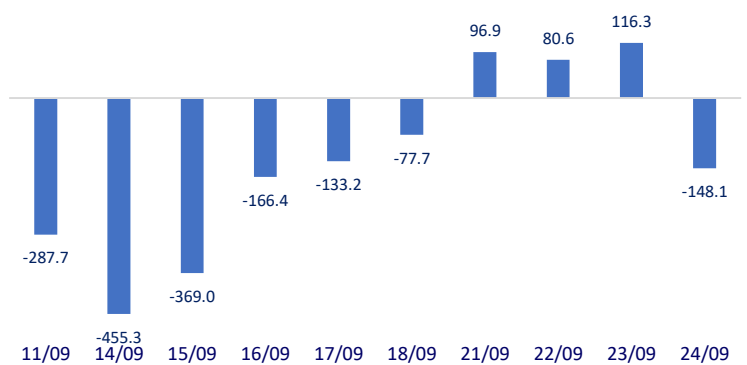
- Iron and steel exports to China surged by more than 1,800%
- Electricity is about to increase in price when electricity generation costs increase. EVN in 2019 recorded a sharp decline in gross profit margin to 2.8%.
- In 9M2020, due to the impact of COVID-19, credit growth of the whole industry remained low - 4.81%, 25% of total outstanding loans were affected.
- Chinese sovereign bonds have won inclusion into FTSE Russell's benchmark bond index a year after they were rejected.
- Australia will loosen responsible lending laws in a bid to boost the flow of credit and help the economy recover from its first recession in almost 30 years.
- Korea consumer confidence slipped for the 1st time in 5M as a jump in virus cases and tighter social restrictions made more pessimistic about the economy.

	Close	1D	5D	Buying vol.	Selling vol.	Content
VCB	86,100	0.82%	4.36%	2,705,550	2,703,760	- BID: Change of authorized person to disclose information - Mr. Tran Phuong - Deputy General Director.
BID	40,900	-1.21%	0.99%	2,716,280	2,861,880	
CTG	26,000	-0.95%	2.77%	6,292,520	7,586,120	
TCB	22,450	0.67%	5.40%	8,926,700	5,787,650	- CTG: Approved transaction contract with subsidiary VBI - Insurance Company.
VPB	23,450	-1.47%	2.63%	6,896,470	8,617,770	- The average NPL ratio of the whole industry decreased from 2.46% (2016) to 1.89% in the two years 2018-2019, but increased to 2.04% on June 30, 2020, mainly as a result of the Covid-19 pandemic.
MBB	19,600	2.08%	8.29%	33,951,760	23,445,780	
HDB	31,050	0.00%	4.90%	3,164,160	1,809,590	Residential real estate market - Urban areas maintain market development momentum.
EIB	17,150	0.29%	0.88%	589,870	540,340	
STB	12,450	-1.58%	8.73%	34,021,660	37,307,160	
NVL	63,500	-0.16%	0.16%	1,841,790	2,548,760	Oil prices rose despite concerns over Covid-19.
TCH	20,650	-1.20%	0.73%	4,134,200	5,695,950	
KDH	24,400	-0.61%	1.24%	938,630	1,047,100	
ROS	2,120	-0.47%	-2.30%	7,843,720	12,959,470	- VHM: Holding the No. 1 real estate market share in the market with 22%, Vinhomes still has 'stockpile' of 164 million m2 of construction floor area, enough for the next decade.
GAS	73,500	1.10%	2.51%	1,406,250	1,627,970	
POW	10,250	-1.44%	2.50%	9,827,960	15,703,700	
PLX	51,700	0.19%	3.40%	436,290	615,270	- VNM: With a strategy to invest in product research and development to bring high-end nutritional choices to consumers, Vinamilk recently launched the first fresh milk containing swallow nest in Vietnam.
VIC	93,000	-1.59%	-1.06%	607,270	740,960	
VHM	77,100	-0.52%	0.52%	3,001,580	3,863,830	
VRE	28,600	-1.72%	1.06%	2,631,060	4,283,160	- SSI: FUESSVFL: Report on fund certificate trading results of an organization related to an insider of SSI Securities Joint Stock Company - selling 400k fund certificates.
VNM	127,300	-1.47%	2.25%	2,264,940	2,602,590	
SAB	187,000	-1.58%	-0.64%	95,250	222,950	
MSN	55,000	-0.72%	1.85%	1,509,560	2,143,780	
SBT	14,450	0.35%	1.40%	5,744,700	4,955,780	
VJC	105,800	-0.66%	-0.09%	492,220	632,650	
FPT	50,500	-1.17%	1.00%	2,891,830	3,088,180	
MWG	101,200	-0.69%	7.43%	2,035,960	1,899,000	
PNJ	62,300	-1.74%	4.18%	1,036,590	1,355,170	
REE	40,400	0.87%	1.25%	842,560	776,580	
SSI	16,550	-0.90%	3.44%	9,279,970	9,467,260	
HPG	25,650	-0.58%	0.98%	26,070,630	21,779,610	

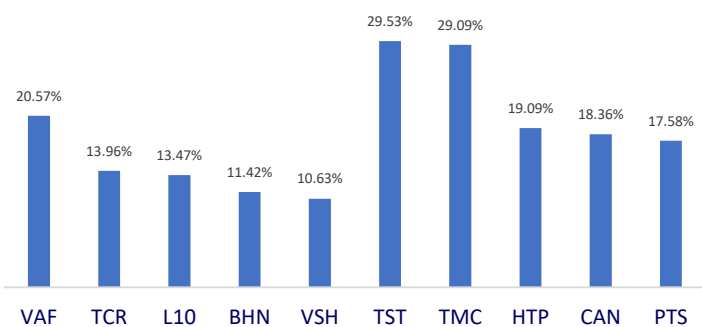
Top most traded tickers (Volume - in million)



Foreign net flow 10 nearest sessions (Billion VND)



Top increases in 3 consecutive sessions



Top decreases in 3 consecutive sessions

