

GLOBAL MARKET	1D	YTD	YTD
DJI	30,216.45	0.12%	5.88%
S&P500	3,694.92	-0.39%	14.37%
NASDAQ	12,742.52	-0.10%	42.02%
VIX	25.16	16.64%	
FTSE 100	6,416.32	-1.73%	-14.93%
DAX	13,246.30	-2.82%	-0.02%
CAC40	5,393.34	-2.43%	-9.78%
Nikkei	26,714.42	-0.18%	12.93%
Shanghai	3,420.57	0.76%	10.92%
Kospi	2,778.65	0.23%	26.44%
Hang Seng	26,306.68	-0.72%	-7.54%
STI (Singapore)	2,846.52	-0.09%	-11.68%
SET (Thailand)	1,401.78	-5.44%	-12.27%
Crude oil (\$/barrel)	47.82	-0.60%	-21.28%
Gold (\$/ounce)	1,883.60	-1.01%	24.11%

- At the end of December 21, the S&P 500 declined slightly after a volatile session, kicking off an exciting week of new stimulus agreements. The S&P 500 fell 0.4 percent, or 14.49 points, to 3,694.92 points, after falling nearly 2 percent at its intraday low. Nasdaq Composite fell 0.1%, or 13.12 points, to 12,742.52 points. The Dow Jones industrial average erased a 400-point drop and recovered slightly thanks to Nike shares and sublimation banking stocks. The Dow Index 30 stocks rose 0.1%, or 37.40 points, to 30,216.45 points.

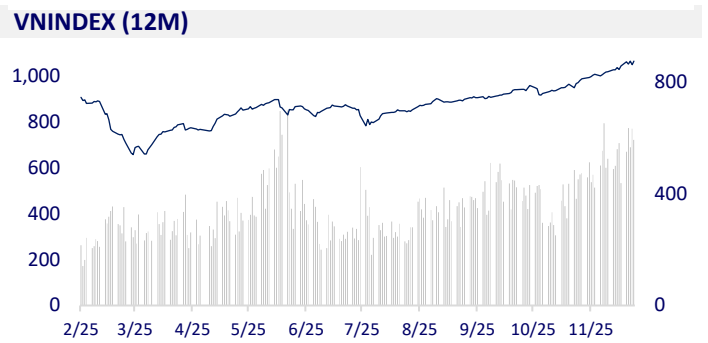
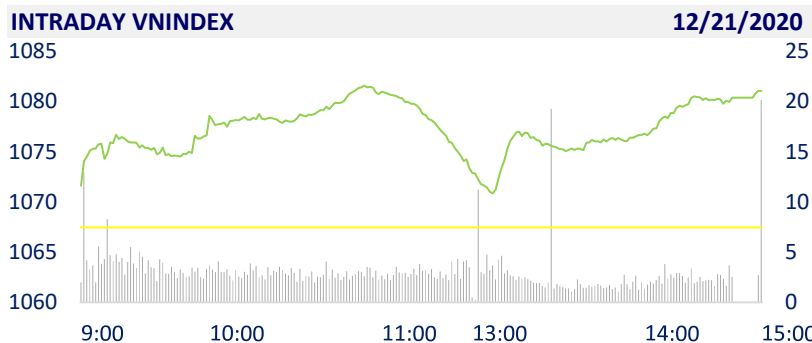
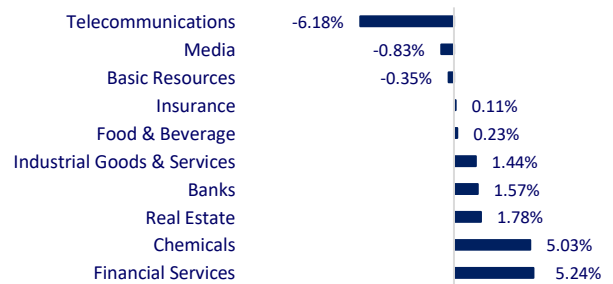
VIETNAM ECONOMY		1D (bps)	YTD (bps)
Vnibor	0.11%	1	-132
Deposit interest 12M	5.80%	0	-70
5 year-Gov. Bond	1.28%	14	-271
10 year-Gov. Bond	2.09%	-8	-261
USD/VND	23,220	0.01%	-0.04%
EUR/VND	28,997	0.07%	9.01%
CNY/VND	3,566	-0.17%	5.01%

- According to Reuters, the US Department of Commerce is about to continue to impose tariffs on Vietnamese goods from December based on accusations that Vietnam undervalues the dong, according to Reuters sources.

VIETNAM STOCK MARKET		1D	YTD
VN-INDEX	1,081.08	1.28%	12.50%
VN30	1,049.71	1.26%	19.41%
HNX	182.11	2.88%	77.65%
UPCOM	71.64	0.97%	26.68%
Net Foreign buy (B)	148.64		
Total trading value (B)	16,842.00	11.99%	381.20%

- Foreign investors' trade was quite positive as they net bought on all 3 exchanges with a total value of 149 billion dong. Purchasing power focused on fund certificates FUEVFNVD (100.22 billion VND), HPG (53.31 billion VND), VCB (31.38 billion VND) ...

ETF & DERIVATIVES		1D	YTD
FUESSV50	15,100	0.67%	19.37%
E1VFN30	17,300	1.76%	17.21%
FUESSV30	12,710.0	1.68%	
FUEVFNVD	16,140.0	0.88%	
VN30F2106	1,033.4	1.68%	
VN30F2103	889.4	0.00%	
VN30F2101	1,032.9	1.76%	
VN30F2012	1,028.0	1.31%	

CHANGE IN PRICE BY SECTOR

EVENT CALENDER

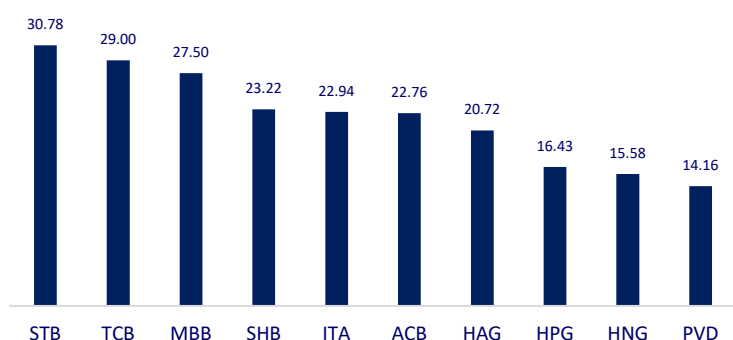
Ticker	Ex-right Date	Last register Date	Exercise Date	Type	Rate	Value
ICN	12/22/2020	12/23/2020	1/20/2021	Cash		2,000
VCI	12/22/2020	12/23/2020	1/5/2021	Cash		1,000
SMB	12/22/2020	12/23/2020	1/4/2021	Cash		1,000
FOX	12/23/2020	12/24/2020	1/22/2021	Cash		2,000
VCC	12/24/2020	12/25/2020	1/15/2021	Cash		1,000
CDC	12/24/2020	12/25/2020		Stock		0.40
MDN	12/24/2020	12/25/2020	1/11/2021	Cash		1,200

SELECTED NEWS

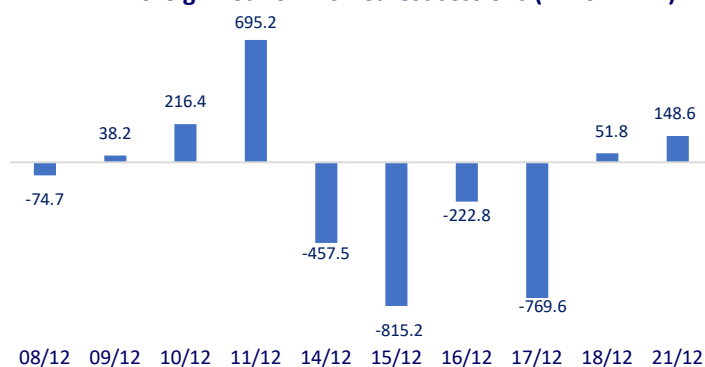
- The World Bank estimates that Vietnam's GDP will increase by 2.8% by 2020
- Despite the COVID-19 translation, remittances 'poured' into Ho Chi Minh City still reach over 5 billion USD
- Ho Chi Minh City: Starting to expand the road more than 100 billion VND in District 12
- British met urgently after discovering a new variant of SARS-CoV-2
- Japan adopted a record budget of 1,000 billion USD
- China announces the White Paper on 'energy in a new age'

	Close	1D	5D	Buying vol.	Selling vol.	Content
VCB	98,900	0.82%	-0.19%	1,170,390	1,191,480	- HDB: HDBank may amend the charter capital in the operation license. Accordingly, Article 2 of the Establishment and Operation License No.26/GP-NHNN dated 12/02/2020 issued by the Governor of the State Bank to HDBank is amended as follows: "Charter capital: 16,088,488,180,000 VND - BID: Moody's upgraded BIDV's foreign currency deposit rating. Accordingly, the foreign currency deposit rating of BIDV increased from B1 to Ba3
BID	47,450	0.96%	2.04%	4,760,990	4,468,480	
CTG	34,850	0.72%	-0.15%	12,751,480	16,343,150	
TCB	29,400	0.68%	12.21%	33,122,890	36,785,100	
VPB	33,000	4.27%	14.98%	9,212,240	10,078,420	
MBB	23,250	0.65%	6.41%	50,249,550	41,528,790	
HDB	24,950	5.27%	11.63%	10,489,260	12,141,820	
EIB	18,400	6.98%	6.98%	3,525,450	1,423,440	
STB	17,000	0.00%	6.58%	40,150,910	46,966,230	
NVL	66,300	0.45%	2.95%	2,973,280	3,205,970	
TCH	19,300	0.00%	0.26%	9,540,860	14,248,800	
KDH	28,100	1.44%	-0.71%	2,689,550	2,782,130	
ROS	2,190	-0.45%	0.46%	14,942,640	22,135,800	- GAS: The whole year EAT is estimated at 7,883 billion dong, down 35% but nearly 19% higher than year target.
GAS	86,300	1.65%	-0.80%	2,163,110	2,361,540	
POW	12,000	0.00%	0.84%	17,652,910	27,355,770	
PLX	54,000	0.37%	-0.92%	1,236,390	1,625,890	- The large-cap stocks such as VHM, VIC were strongly net bought by foreign investors yesterday with the value of 27 billion and 26 billion dong, respectively.
VIC	106,400	1.62%	-2.30%	1,364,040	1,152,890	
VHM	87,100	2.11%	0.11%	6,034,820	5,855,830	
VRE	30,400	0.83%	1.33%	14,685,410	18,632,180	-
VNM	111,000	0.54%	-2.12%	3,684,000	4,520,210	
SAB	200,000	-0.89%	-1.96%	218,580	104,880	
MSN	83,800	-0.36%	0.36%	1,294,050	1,822,890	- REE: REE has just registered to sell more than 1.9 million GDW shares (ratio 20.05%) of Gia Dinh Water Supply Joint Stock Company (HNX: GDW) from December 22, 2020 - January 19, 2021 in an out-of-system manner.
SBT	20,800	5.05%	5.05%	7,853,380	6,939,610	
VJC	125,800	0.64%	-0.94%	865,280	802,370	
FPT	57,500	1.05%	0.52%	3,241,150	4,003,750	
MWG	116,200	1.04%	0.43%	2,037,730	2,468,720	
PNJ	77,300	0.00%	-0.39%	1,200,430	1,288,430	
REE	47,100	1.07%	-0.95%	902,370	1,011,960	
SSI	28,650	6.90%	13.92%	23,851,920	20,846,900	
HPG	38,550	-0.13%	-1.78%	22,306,240	33,521,730	

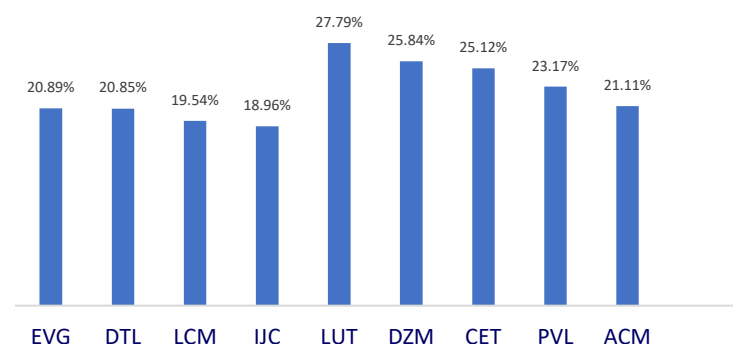
Top most traded tickers (Volume - in million)



Foreign net flow 10 nearest sessions (Billion VND)



Top increases in 3 consecutive sessions



Top decreases in 3 consecutive sessions

