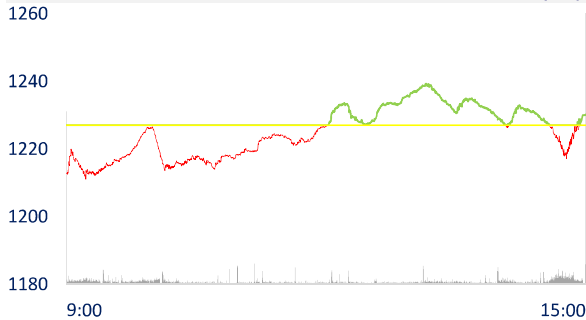
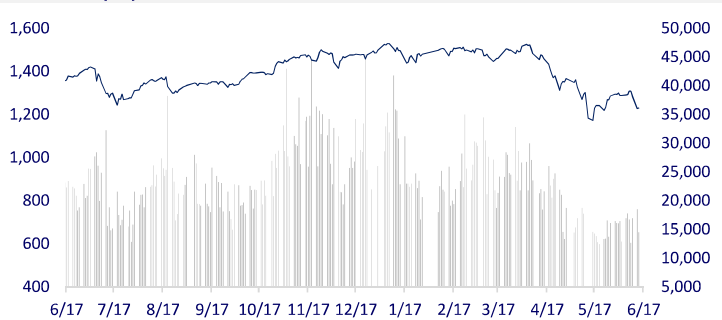
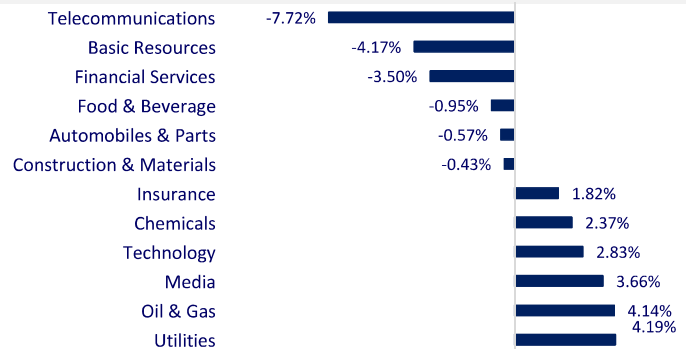


VIETNAM STOCK MARKET		1D	YTD
VN-INDEX	1,230.31	0.27%	-17.89%
VN30	1,261.16	0.02%	-17.88%
HNX	290.08	0.59%	-38.80%
UPCOM	90.62	0.10%	-19.58%
Net Foreign buy (B)	347.91		
Total trading value (B)	17,232.24	-24.43%	-44.54%

Foreign investors were active again with a net buying of 9.9 million shares, equivalent to a net buying value of VND360 billion. GAS was bought the most by foreign investors on HoSE with 55 billion dong. HPG and HDB were net bought VND 50 billion and VND 36 billion respectively. Meanwhile, PNJ was sold the most with 28 billion dong. NVL, MWG and VNM were all net sold over 20 billion dong.

**INTRADAY VNINDEX 6/14/2022**

**VNINDEX (1Y)**


ETF & DERIVATIVES		1D	YTD
E1VFN30	21,900	0.74%	-15.21%
FUEMAV30	14,800	-0.07%	-18.19%
FUESSV30	15,500	-12.97%	-18.42%
FUESSV50	19,930	6.35%	-12.97%
FUESSVFL	16,200	-1.70%	-27.94%
FUEVFNVD	27,500	1.29%	-1.96%
FUEVN100	16,200	-0.49%	-24.58%
VN30F2212	1,259.00	-0.08%	
VN30F2209	1,265.00	0.24%	
VN30F2207	1,262.00	0.32%	
VN30F2206	1,268.30	0.64%	

**CHANGE IN PRICE BY SECTOR**


GLOBAL MARKET		1D	YTD
Nikkei	26,629.86	-1.32%	-7.51%
Shanghai	3,288.91	1.02%	-9.64%
Kospi	2,492.97	-0.46%	-16.28%
Hang Seng	21,067.99	0.00%	-9.96%
STI (Singapore)	3,108.89	-0.97%	-0.47%
SET (Thái Lan)	1,603.03	0.19%	-3.29%
Crude oil (\$/barrel)	121.91	2.38%	59.36%
Gold (\$/ounce)	1,823.30	-2.01%	0.14%

Stocks in the Asia-Pacific region largely fell. Accordingly, the Shanghai Composite index increased 1.02% to 3,288.91 points, while the Shenzhen Component index increased 0.204% to 12,023.79 points. The Hang Seng Index rose 0.0019% to 21,067.99 points. The Nikkei 225 index fell 1.32% to 26,629.86 points, while the Topix index dropped 1.19 points to 1,878.45 points. Korea's Kospi index fell 0.46% to 2,492.97 points.

VIETNAM ECONOMY		1D (bps)	YTD (bps)
Vnibor	0.37%	-1	-44
Deposit interest 12M	5.60%	0	0
5 year-Gov. Bond	2.64%	4	163
10 year-Gov. Bond	3.19%	8	119
USD/VND	23,435	0	2.16%
EUR/VND	24,649	0	-6.87%
CNY/VND	3,516	0	-3.88%

According to statistics from the General Department of Customs, in May, the total import-export turnover reached 63.53 billion USD, down 3.4% compared to April 2022. Accumulated to the end of May, Vietnam's total export turnover reached 306.14 billion USD, up 16% (equivalent to 42.2 billion USD) over the same period last year.

**EVENT CALENDER**

Ticker	Ex-right Date	Last register Date	Exercise Date	Type	Rate	Value
FPT	6/13/2022	6/14/2022	6/27/2022	Cash		1,000
FPT	6/13/2022	6/14/2022		Stock	5:1	
GMC	6/13/2022	6/14/2022	6/24/2022	Cash		2,000
PHP	6/13/2022	6/14/2022	6/30/2022	Cash		400
DTK	6/13/2022	6/14/2022	6/28/2022	Cash		600
NTH	6/14/2022	6/15/2022	6/30/2022	Cash		1,000
MVB	6/14/2022	6/15/2022	6/22/2022	Cash		1,600
VSI	6/14/2022	6/15/2022	6/27/2022	Cash		2,000
BCF	6/14/2022	6/15/2022		Stock	100:10	

**SELECTED NEWS**

Imports still increase, exports are less than estimated

WB: Vietnam needs more actions to reduce inflation pressure

Approving 2 projects of catering area at Long Thanh airport with a total area of more than 60,000 m2

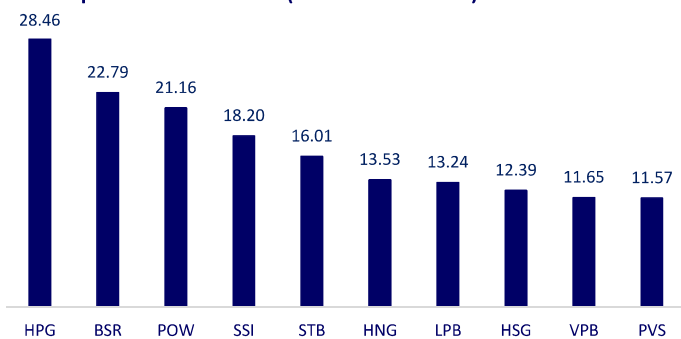
Inflation pushes investors away from Asia's emerging bond markets

The risk of corruption and waste from tens of billions of dollars in aid to Ukraine

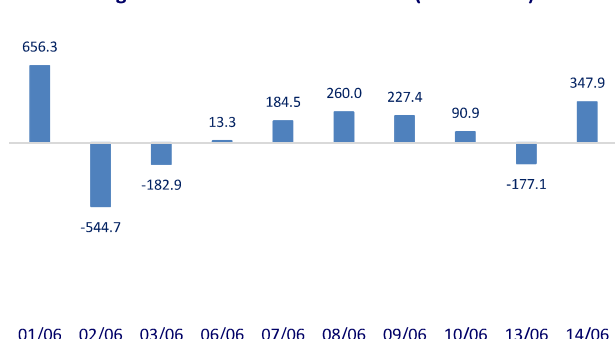
The number of Covid-19 cases in Beijing skyrocketed

	Close	1D	5D	Buying vol.	Selling vol.	Content
VCB	77,000	0.79%	-4.94%	1,920,900	1,688,800	STB: Saigon Thuong Tin Commercial Joint Stock Bank (Sacombank) announces the auction of debt clearing assets between Phuong Nam Commercial Joint Stock Bank (merged into Sacombank) and Hao Duong Leather Joint Stock Company. The starting price is 450 billion VND, 10% pre-order. The property has an area of 59,937m2 with the purpose of using industrial land.
BID	32,300	1.10%	-3.87%	2,504,400	1,991,700	
CTG	25,250	0.00%	-7.85%	6,002,400	5,304,900	
TCB	35,750	-0.69%	-1.24%	7,125,600	5,764,200	
VPB	28,850	0.35%	-5.25%	20,874,000	16,263,100	
MBB	25,500	-0.58%	-5.38%	16,184,700	12,353,800	
HDB	24,900	1.43%	-1.58%	4,438,700	4,101,400	
TPB	26,500	-4.16%	-10.47%	6,219,000	7,036,900	
STB	20,900	1.46%	3.47%	26,931,300	22,504,400	
ACB	24,100	0.84%	-3.41%	4,950,000	3,660,600	
NVL	76,600	0.79%	0.79%	3,283,000	4,652,000	Ministry of Construction: It's time to set the time limit for apartment ownership
KDH	39,000	-2.26%	-3.47%	1,535,300	1,852,500	
PDR	49,900	-0.20%	-5.67%	2,446,500	2,601,500	
GAS	126,000	6.78%	-3.08%	2,705,800	2,188,900	On June 14, WTI crude oil traded above the threshold of USD 120/barrel, the global benchmark Brent oil was above USD 122/barrel.
POW	15,250	0.00%	3.39%	45,947,200	60,234,000	
PLX	43,100	2.62%	-7.71%	2,700,000	2,413,500	
VIC	76,600	0.26%	-1.79%	3,122,300	3,278,200	VIC: VinFast car company opens more than 50 stores in Europe
VHM	66,000	0.00%	-3.65%	4,482,500	4,657,900	
VRE	29,150	0.52%	-2.51%	4,267,000	3,500,800	
VNM	66,100	-0.45%	-6.37%	2,701,800	2,097,700	VNM: Vinamilk and its subsidiaries continuously announced more information about major projects
MSN	106,300	-2.48%	-9.84%	2,681,300	2,188,000	
SAB	150,000	-1.96%	-6.19%	316,300	325,700	
BVH	124,800	-0.08%	-1.58%	854,100	810,000	FPT: FPT IS will cooperate with Best Telecom in a strategic partnership in research, construction and development of a number of IT projects in Laos in the near future.
VJC	124,800	-0.08%	-1.58%	854,100	810,000	
FPT	89,100	3.36%	-6.66%	4,692,600	3,740,500	
MWG	143,500	2.50%	-6.21%	3,436,600	2,339,400	
PNJ	116,000	3.29%	-9.38%	2,075,500	1,363,400	
GVR	24,750	1.85%	-2.17%	4,583,800	2,929,500	
SSI	24,350	-6.17%	-13.65%	30,036,700	33,124,200	
HPG	30,300	-4.72%	-8.73%	42,447,500	47,094,300	

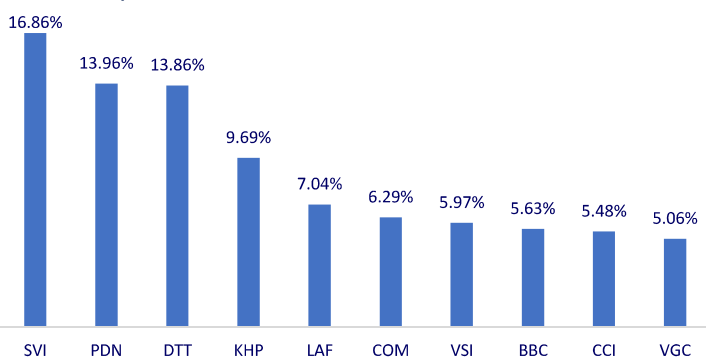
**Top most traded tickers (Volume - in million)**



**Foreign net flow 10 nearest sessions (Billion VND)**



**Top increases in 3 consecutive sessions**



**Top decreases in 3 consecutive sessions**

