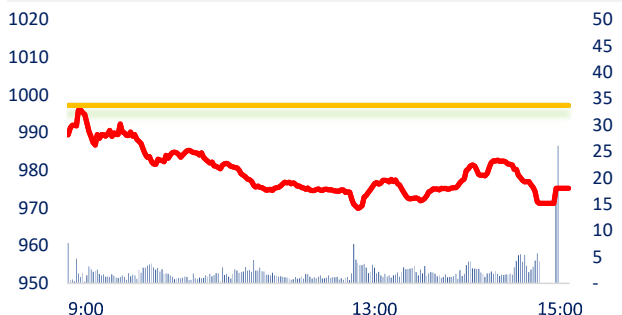
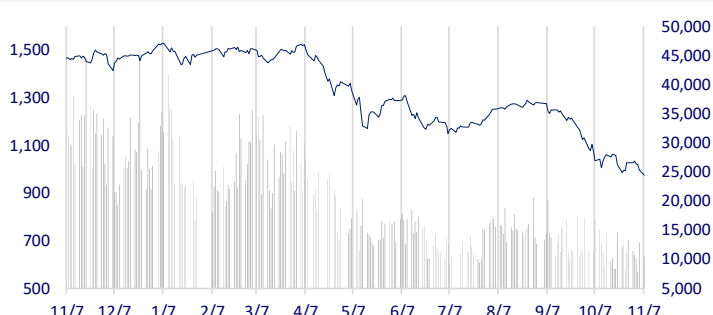


VIETNAM STOCK MARKET		1D	YTD
VN-INDEX	975.19	-2.20%	-34.91%
VN30	972.85	-2.49%	-36.65%
HNX	198.56	-2.93%	-58.11%
UPCOM	72.25	-2.71%	-35.88%
Net Foreign buy (B)	579.19		
Total trading value (B)	11,880.94	-16.97%	-61.76%

On November 7, a sell-off wave of stocks occurred in the session. Nearly 70 real estate stocks were in red, of which 39 stocks fell to the floor. PDR and NVL oversold at the floor price up to millions of shares. The sell-off session took place after the market had a lot of information about force-selling shares of real estate firms' BOD.

INTRADAY VNINDEX 11/7/2022

VNINDEX (1Y)


ETF & DERIVATIVES		1D	YTD
E1VFN30	16,550	-2.24%	-35.93%
FUEMAV30	11,450	-2.55%	-36.71%
FUESSV30	11,960	-6.56%	-37.05%
FUESSV50	13,990	-6.17%	-38.91%
FUESSVFL	12,700	-3.86%	-43.51%
FUEVFVND	20,940	-3.94%	-25.35%
FUEVN100	12,520	-2.80%	-41.71%
VN30F2303	910.60	-4.95%	
VN30F2212	938.20	-3.48%	
VN30F2211	935.00	-2.28%	
VN30F2210	950.00	-3.06%	

CHANGE IN PRICE BY SECTOR


GLOBAL MARKET		1D	YTD
Nikkei	27,527.64	1.21%	-4.39%
Shanghai	3,077.82	0.23%	-15.44%
Kospi	2,371.79	0.99%	-20.35%
Hang Seng	16,595.91	2.69%	-29.07%
STI (Singapore)	3,141.31	0.36%	0.56%
SET (Thái Lan)	1,623.57	-0.17%	-2.05%
Brent oil (\$/barrel)	98.64	1.89%	28.94%
Gold (\$/ounce)	1,681.75	2.03%	-7.64%

At the end of the session, Asian markets mostly gained, including Nikkei (Japan), Kospi (Korea), Shanghai Composite (China), especially Hang Seng (Hong Kong) increased sharply by 2.69%, when investors were optimistic about the government's loosening policies on Covid-19 epidemic restriction.

VIETNAM ECONOMY		1D (bps)	YTD (bps)
Vnibor	7.00%	7	619
Deposit interest 12M	7.40%	0	180
5 year-Gov. Bond	4.92%	9	391
10 year-Gov. Bond	4.98%	8	298
USD/VND	24,875	-0.01%	8.44%
EUR/VND	25,290	0.98%	-4.45%
CNY/VND	3,511	0.40%	-4.02%

Many real estate businesses are borrowing from the society at very high interest rates, narrowing the scale of investment and business activities due to a deep drop in liquidity. HoREA forecasts that the real estate market will still be difficult because of the limitation of the construction of real estate projects in most localities, leading to a decrease in housing supply.

EVENT CALENDAR

Ticker	Ex-right Date	Last register Date	Exercise Date	Type	Rate	Value
HAS	11/7/2022	11/8/2022	11/16/2022	Cash		150
NHT	11/7/2022	11/8/2022		Stock	100:30	
TV4	11/9/2022	11/10/2022		Stock	100:12	
SZL	11/10/2022	11/11/2022	11/30/2022	Cash		1,000
NVL	11/11/2022	10/14/2022		Stock	1:0.2475	
SZG	11/29/2022	11/30/2022	12/28/2022	Cash		500
NTC	11/29/2022	11/30/2022	12/26/2022	Cash		1,000
FOX	11/29/2022	11/30/2022	12/30/2022	Cash		1,000

SELECTED NEWS

Thua Thien Hue will start many big projects in the last 2 months of the year;

Vietnam has a trade surplus of USD9.4 billion in 10 months;

Binh Duong's public investment plan in 2023 is VND12,182 billion;

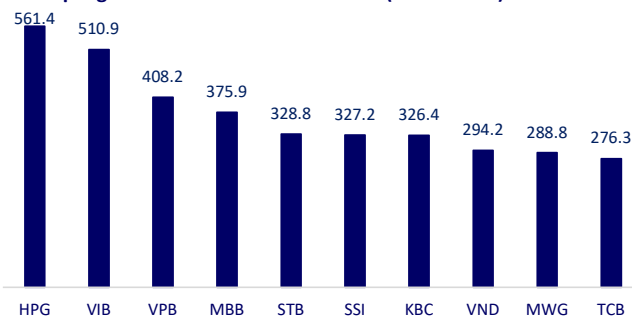
China's exports unexpectedly fell in October;

China continues its Zero COVID policy;

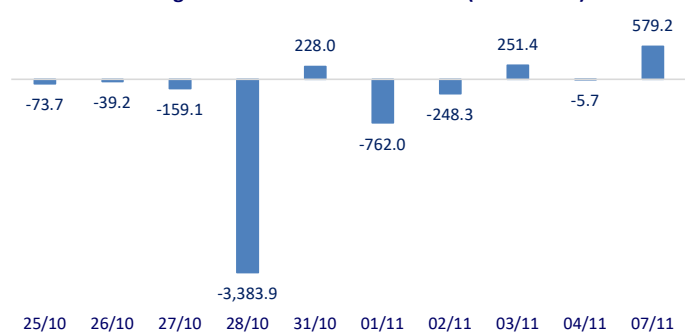
The vice governor of the People's Bank of China is under investigation.

	Close	1D	5D	Buying vol.	Selling vol.	Content
VCB	71,800	0.00%	-2.31%	1,649,673	1,875,061	TCB: Techcombank said that from November 5, the bank increased the interest rate on demand deposits by 33 times, to 1% per year. This is also the maximum interest rate applicable to CASA as regulated by the State Bank. Previously, despite other banks raising demand deposit rates since the end of September, Techcombank still maintained the interest rate of this deposit at the lowest level in the system, only 0.03% per year.
BID	33,300	0.00%	-3.62%	2,574,519	2,668,899	
CTG	23,350	-4.69%	-5.08%	11,952,115	12,956,051	
TCB	23,750	-6.86%	-3.46%	9,752,641	10,396,848	
VPB	17,100	0.88%	4.59%	37,637,041	35,561,936	
MBB	16,950	-5.31%	-4.24%	22,509,193	22,497,928	
HDB	14,350	-6.82%	-12.50%	5,377,580	6,747,500	
TPB	20,100	-5.63%	-2.90%	5,712,386	4,752,223	
STB	15,500	-6.63%	-4.02%	32,472,396	43,850,009	
VIB	18,450	-6.58%	-5.87%	7,403,483	9,627,434	
ACB	20,650	2.48%	-7.81%	7,374,400	7,625,276	
NVL	55,800	-6.84%	-20.29%	393,636	18,417,037	NVL: Nova Saigon Royal Real Estate Investment Ltd - a subsidiary of Novaland has just announced the results of the unsuccessful bond issue of NSRCH2223002.
KDH	19,950	-6.99%	-12.11%	2,027,374	2,779,024	
PDR	34,900	-6.93%	-20.14%	280,261	19,142,479	
GAS	112,900	1.71%	1.62%	590,064	832,382	Not only in HCMC and neighboring provinces, but the situation of temporarily suspending sales in gas stations has also appeared in Hanoi.
POW	9,790	-0.10%	-5.41%	10,075,629	10,082,874	
PLX	28,850	0.17%	1.23%	1,231,764	1,623,476	
VIC	53,400	-1.66%	-3.61%	2,277,062	2,839,839	VHM: In order for Vinhomes to focus on real estate business as well as promote the efficiency of construction activities, Vingroup has transferred all shares in Vincons to Vinhomes.
VHM	43,900	-1.35%	-2.44%	5,159,242	7,097,499	
VRE	25,500	-1.92%	3.66%	2,309,658	3,174,107	
VNM	82,200	2.75%	4.71%	4,298,404	4,537,607	VNM: Vinamilk plans to replicate the model of Vinamilk Green Farm.
MSN	84,500	0.24%	-1.17%	1,983,776	1,868,456	
SAB	184,000	1.10%	-0.70%	255,663	283,734	
BVH	48,900	-2.20%	-6.86%	1,249,076	1,350,619	HPG: In October 2022, Hoa Phat Group achieved a crude steel output of 567,000 tons, down 19% over the same period. Sales volume of construction steel, billet and hot rolled coil (HRC) reached 492,000 tons, down 42% compared to October 2021. In which, construction steel reached nearly 210,000 tons, equaling 45% of the same period. Hot rolled coil (HRC) recorded 267,000 tons, up 30%.
VJC	100,200	0.10%	-6.88%	523,563	327,311	
FPT	72,600	-0.41%	-3.97%	2,475,428	2,538,316	
MWG	42,850	-6.95%	-16.96%	7,494,301	8,927,812	
GVR	12,450	-6.74%	-13.54%	2,592,451	3,271,184	
SSI	14,300	-6.84%	-12.27%	30,417,928	35,428,254	
HPG	13,700	-6.48%	-12.46%	59,228,564	56,251,469	

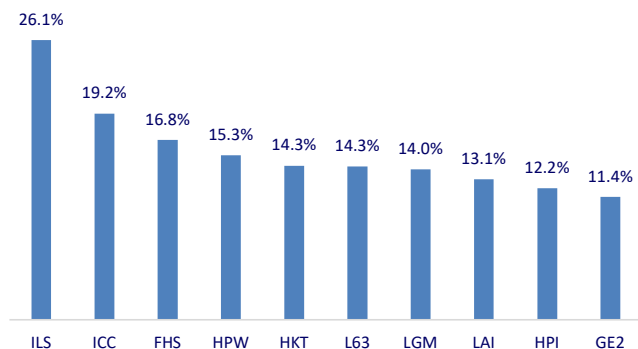
Top highest total traded value stocks (Billion VND)



Foreign net flow 10 nearest sessions (Billion VND)



Top increases in 3 sessions



Top decreases in 3 sessions

