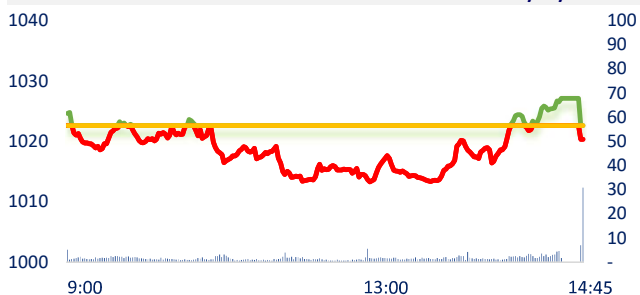
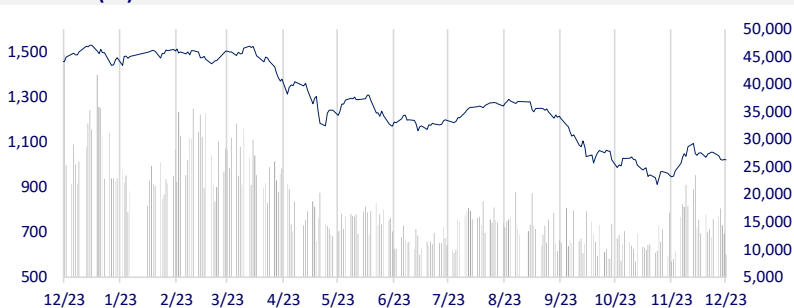
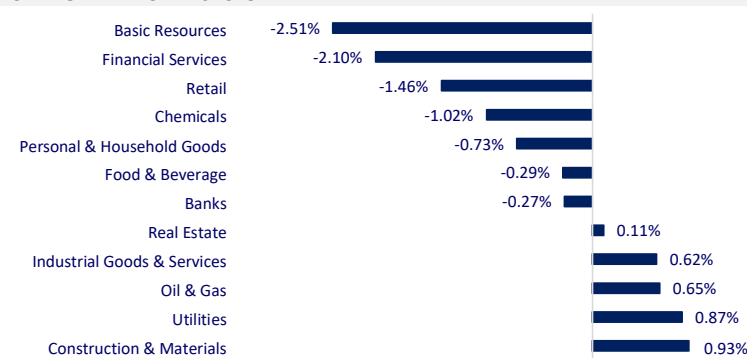


VIETNAM STOCK MARKET		1D	YTD
VN-INDEX	1,020.34	-0.22%	-31.90%
VN30	1,034.13	-0.41%	-32.66%
HNX	205.30	-0.24%	-56.69%
UPCOM	71.01	0.25%	-36.98%
Net Foreign buy (B)	99.99		
Total trading value (B)	10,189.85	-28.31%	-67.21%

After slight increase at the previous session, VN-Index reversed to decrease again. The weak demand caused the index to narrow its gain before correcting slightly at the end of the session. Notably, the liquidity dropped sharply by 30% compared to the previous session when the trading value on HOSE was just over VND9,000 billion.

**INTRADAY VNINDEX 12/23/2022**

**VNINDEX (1Y)**


ETF & DERIVATIVES		1D	YTD
E1VFN30	17,700	0.00%	-31.48%
FUEMAV30	12,300	-0.24%	-32.01%
FUESSV30	12,680	-0.94%	-33.26%
FUESSV50	14,000	-0.14%	-38.86%
FUESSVFL	14,880	0.54%	-33.81%
FUEVFVND	23,140	1.05%	-17.50%
FUEVN100	13,590	2.33%	-36.73%
VN30F2306	1,015.00	0.08%	
VN30F2303	1,030.00	0.64%	
VN30F2302	1,036.00	0.05%	
VN30F2301	1,034.80	-0.28%	

**CHANGE IN PRICE BY SECTOR**


GLOBAL MARKET		1D	YTD
Nikkei	26,235.25	-1.03%	-8.88%
Shanghai	3,045.87	-0.28%	-16.32%
Kospi	2,313.69	-1.83%	-22.30%
Hang Seng	19,593.06	-0.44%	-16.26%
STI (Singapore)	3,255.86	-0.42%	4.23%
SET (Thailand)	1,619.12	0.15%	-2.32%
Brent oil (\$/barrel)	82.67	0.35%	8.07%
Gold (\$/ounce)	1,804.65	0.23%	-0.89%

At the end of the session, the Asian market simultaneously dropped due to investors' concerns about the tightening monetary policy of central banks around the world, which will push the economy into recession.

VIETNAM ECONOMY		1D (bps)	YTD (bps)
Vnibor	3.50%	-20	269
Deposit interest 12M	7.40%	0	180
5 year-Gov. Bond	4.84%	6	383
10 year-Gov. Bond	4.92%	6	292
USD/VND	23,763	-0.01%	3.59%
EUR/VND	25,760	0.07%	-2.67%
CNY/VND	3,447	-0.17%	-5.77%

The Governor of the State Bank of Vietnam requires credit institutions to strictly control credit risks for investment activities in corporate bonds and potentially risky fields such as securities, real estate sector, especially credit granting for the purpose of real estate investment and business.

**EVENT CALENDAR**

Ticker	Ex-right Date	Last register Date	Exercise Date	Type	Rate	Value
BCF	12/23/2022	12/26/2022	1/12/2023	Cash		1,200
NBT	12/23/2022	12/26/2022	1/5/2023	Cash		500
SBA	12/23/2022	12/26/2022	2/28/2022	Cash		1,000
HC3	12/23/2022	12/26/2022	1/5/2023	Cash		1,000
QHD	12/26/2022	12/27/2022	6/1/2023	Cash		2,000
NSC	12/27/2022	12/28/2022	1/19/2023	Cash		3,000
HTC	12/27/2022	12/28/2022	1/13/2023	Cash		300
PIC	12/27/2022	12/28/2022	2/1/2023	Cash		800

## SELECTED NEWS

It is expected to operate the No.1 metro line by the end of 2023;

Economy 2022 - 2023: A 'busy' year for the transport sector;

Lack of orders, many businesses in Ho Chi Minh City still try to maintain the labor source;

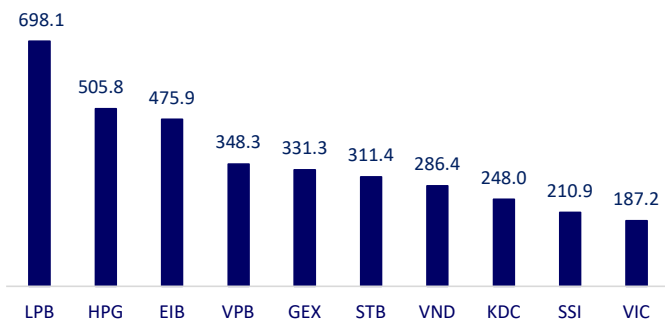
Shopee's parent company stopped raising wages, cutting bonuses right before the holiday;

Indonesia raised interest rates to the highest level in more than 3 years;

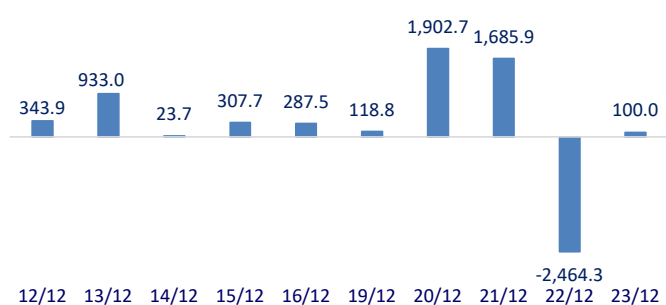
The world gold price may rise to 4,000 USD/oz in 2023.

	Close	1D	5D	Buying vol.	Selling vol.	Content
VCB	79,100	-0.25%	-0.75%	2,320,176	1,871,038	TPB: Responding to the policy of reducing lending interest rates of the State Bank of Vietnam, TPBank deployed a credit package of VND5,000 billion with special preferential interest rates, of which up to VND2,000 billion is for green development enterprises, export enterprises, and women-owned enterprises from the WSME program.
BID	39,000	0.00%	0.26%	1,592,535	2,346,401	
CTG	27,650	0.18%	-1.43%	5,539,869	6,557,372	
TCB	27,600	-0.36%	-5.32%	6,388,479	5,536,223	
VPB	18,350	-0.54%	-0.81%	38,690,095	35,392,645	
MBB	17,750	-1.39%	-5.59%	11,764,199	11,751,436	
HDB	17,000	0.89%	-1.73%	2,956,484	3,138,921	
TPB	22,000	-1.57%	-4.35%	3,733,634	4,855,648	
STB	23,500	0.43%	3.07%	28,065,959	27,914,837	
VIB	19,650	-1.50%	-5.53%	3,580,499	3,305,076	
ACB	22,900	0.00%	-0.43%	3,401,232	3,705,037	
NVL	15,100	-2.58%	-17.03%	25,915,060	28,962,487	PDR: Mr. Nguyen Van Dat, Chairman of Phat Dat has just announced that he has been mortgaged 3.5 million PDR shares by a securities company.
KDH	26,250	-2.23%	-4.55%	1,990,995	1,940,919	
PDR	13,050	1.95%	-10.00%	21,347,251	18,601,932	
GAS	101,500	0.30%	-4.61%	576,272	521,607	GAS: PetroVietnam Gas Corporation approved the plan to terminate a branch in Ba Ria - Vung Tau.
POW	10,950	2.34%	-4.37%	27,494,930	18,997,214	
PLX	30,900	0.82%	-0.32%	1,072,939	1,106,493	
VIC	55,100	0.18%	-5.65%	3,462,084	3,038,628	VIC: VinFast claims to have enough licenses to sell the first VF8 electric cars in the US.
VHM	49,800	1.63%	1.01%	2,277,706	2,421,115	
VRE	25,800	-0.77%	-1.53%	3,028,996	4,305,452	
VNM	76,200	-1.04%	-0.56%	2,515,210	2,957,181	SAB: Favorable business, SABECO plans to spend VND640 billion to advance dividend for the second period of 2022 for shareholders.
MSN	95,000	0.64%	1.60%	1,043,618	903,943	
SAB	175,000	-0.17%	0.25%	194,408	201,423	
BVH	47,900	-0.62%	-3.43%	1,059,975	877,187	SSI: SSI plans to issue a maximum of 10 million shares with the par value of 10,000 VND/share to members of the Board of Directors, key personnel of SSI and its subsidiaries. If the issuance is successful, it is estimated that SSI can collect VND100 billion. The release time is expected in the fourth quarter of 2022 to the end of 2023.
VJC	111,500	0.18%	-1.33%	418,277	440,625	
FPT	78,000	1.04%	0.13%	2,082,393	2,041,689	
MWG	45,800	-1.51%	-4.28%	2,869,814	4,003,436	
GVR	14,350	-1.03%	-9.18%	2,264,333	2,614,545	
SSI	18,300	-4.19%	-10.73%	22,236,258	21,912,768	
HPG	18,350	-2.91%	-10.05%	48,514,684	51,630,759	

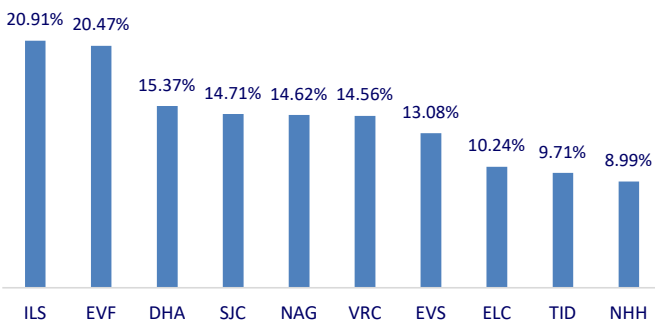
Top highest total traded value stocks (Billion VND)



Foreign net flow 10 nearest sessions (Billion VND)



Top increases in 3 sessions with liquidity



Top decreases in 3 sessions with liquidity

