

# USERGUIDE FOR TRAINING DERIVATIVES ON THE ALPHATRADING APPLICATION

## Step 1: Download the Alphatrading application:

Please follow the instructions here:

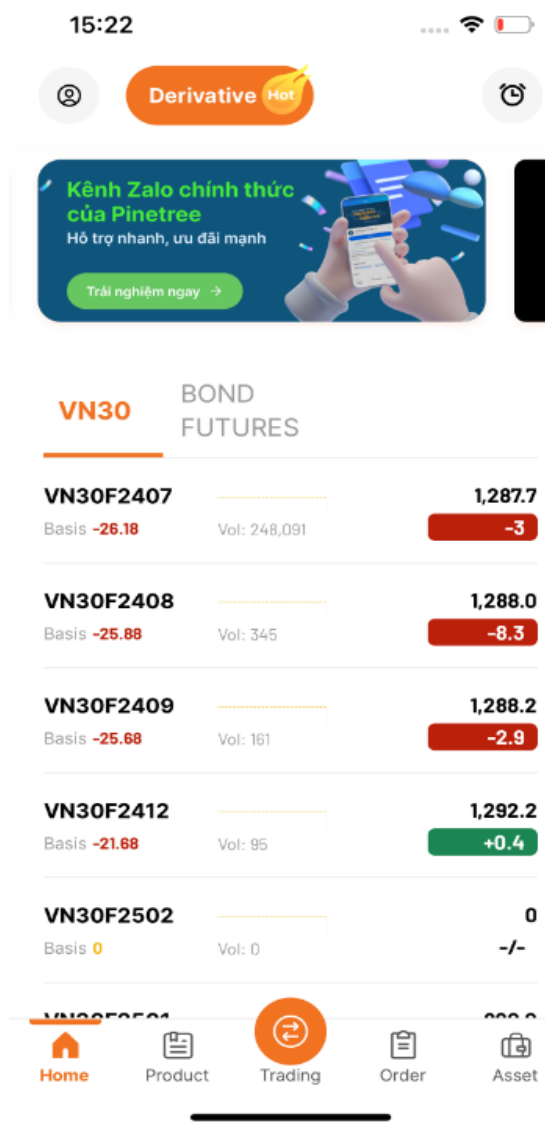
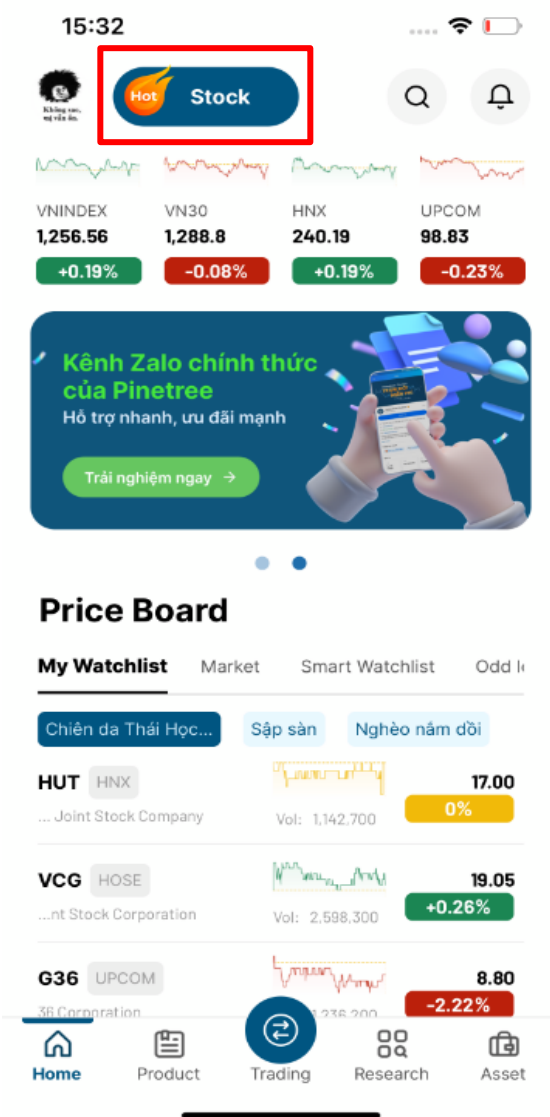
<https://pinetree.vn/alphatrading/userguide/docs/basics/installation/>

Afterwards, proceed to log in as instructed below:

<https://pinetree.vn/alphatrading/userguide/docs/basics/signin/>

## Step 2: Switching to Derivatives Mode

After successfully logging in, the homepage will display information such as the Derivatives Price Board for VN30 index Futures or Government Bond Futures & related news.

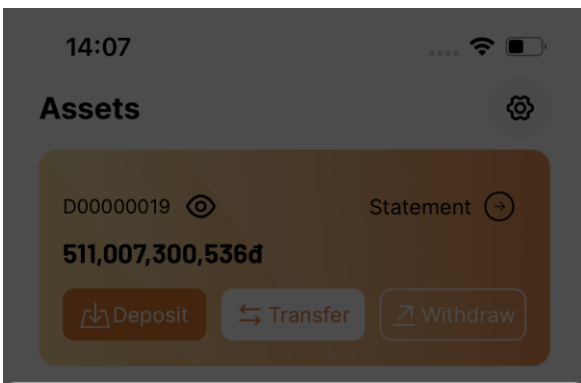


# USERGUIDE FOR TRAINING DERIVATIVES ON THE ALPHATRADING APPLICATION

## Deposit/Withdraw Margin into/from VSDC

- Go to Assets Tab, select Deposit/Withdraw into/from VSDC
- Choose transaction type and enter the amount to transfer.
- Margin deposit amount/Margin withdrawal amount: Enter the desired amount.
- Press **Confirm** to complete the **deposit/withdrawal into/from the CCP margin account**.

## Deposit CCP



### Deposit CCP

Derivative Account

**D00000019**

Margin money at VSD

**76,903,873,123**

Margin amount that can be deposited

**76,903,873,123**

Margin deposit amount

76,903,873,123

Max

\* Margin deposit amount  $\geq$  20.000 VND

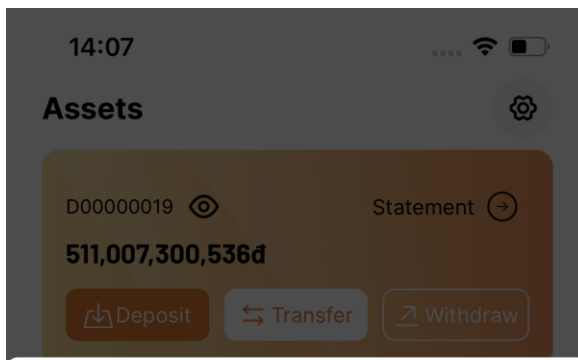
Transfer fees

**5,500 VND**

\* Margin deposit time from 8:00 to 16:30

**Confirm**

## Withdraw CCP



### Withdraw CCP

Derivative Account

**D00000019**

Margin money at VSD

**432,836,973,863**

Margin amount that can be withdrawn

**432,836,973,863**

Margin withdrawal amount

432,836,973,863

Max

\* Margin withdrawal amount  $\geq$  5500 VND

Transfer fees

**5,500 VND**

\* Margin withdraw time from 8:00 to 16:00

\* Margin money at VSD has left min 10,000 VND

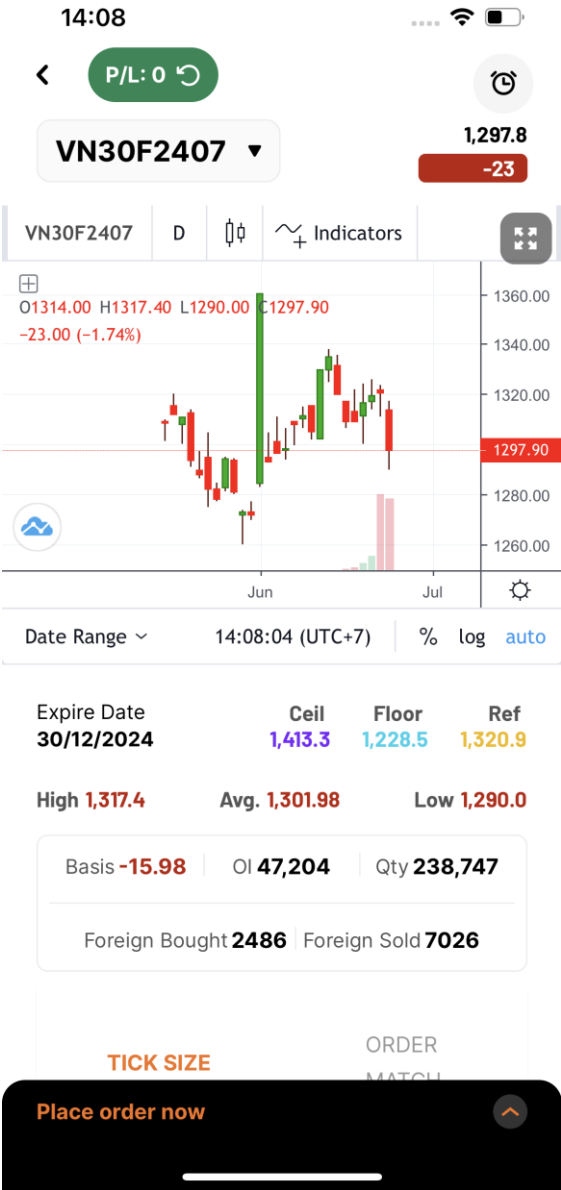
**Confirm**

# USERGUIDE FOR TRADING DERIVATIVES ON THE ALPHATRADING APPLICATION

## Details of Futures Contracts

To view detailed information about an index futures or government bond futures, you can choose from your *watchlist* the contract you want to check or choose to the **Trading** tab. On the contract detail screen, you can find the following information:

- Maturity date;
- Real-time price chart and latest matched price updates;
- Ceiling pPrice, floor price, High, Average, Low and reference price corresponding to each symbol;
- Tick size information and price matching history

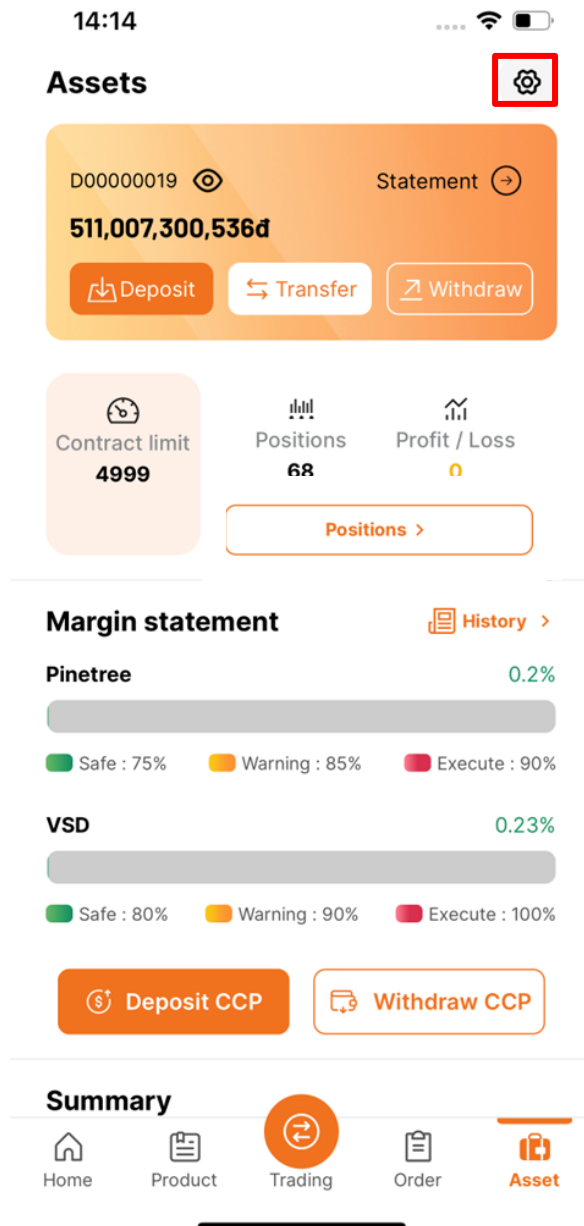


# USERGUIDE FOR TRAINING DERIVATIVES ON THE ALPHATRADING APPLICATION

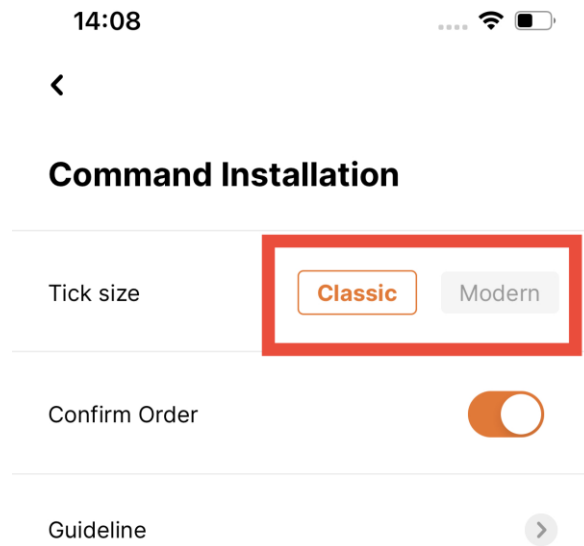
## Setting Orders and Price Details

### a) View Price Details

**Step 1:** On the **Assets** screen, select the Settings icon located in the top right corner



**Step 2:** Select the Tick Size View type: 'Classic' or 'Modern'



# USERGUIDE FOR TRADING DERIVATIVES ON THE ALPHATRADING APPLICATION

## Mode Classic

15:32 📶 🔋

< P/L: 0 ↻ 🕒

VN30F2407 ▾

1,290.7

-30.2

Foreign Bought **5614** | Foreign Sold **8733**

**TICK SIZE**

ORDER MATCH

Bid vol	Bid Price	Ask Price	Ask vol
4	1,290.6	1,290.7	398
70	1,290.2	1,290.8	4
62	1,290.1	1,290.9	4
21	1,290	1,291	131
200	1,289.9	1,291.1	10
33	1,289.5	1,291.2	1
10	1,289.2	1,291.3	16
6	1,289.1	1,291.4	3
8	1,289	1,291.5	8
3	1,288.6	1,291.6	38

Place order now
⤴

## Mode Modern

14:10 📶 🔋

< P/L: 0 ↻ 🕒

VN30F2407 ▾

1,294.7

-25.8

Foreign Bought **2612** | Foreign Sold **7028**

**TICK SIZE**

ORDER MATCH

Ceil	Bid
1413.3	
1,295	4
1,294.8	23
1,294.2	58
1,294.1	36
1,294	187
<div style="display: flex; justify-content: center; align-items: center;"> <span style="font-size: 1.2em; font-weight: bold; color: #000080;">1,294.7</span> <div style="background-color: #800000; color: white; padding: 2px 10px; border-radius: 5px; margin-left: 10px;">-25.8</div> </div>	
1,294.9	2
1,295	29
1,295.1	26
1,295.3	2
1,295.4	9
Floor 1228.5	Ask

Place order now
⤴

# USERGUIDE FOR TRAINING DERIVATIVES ON THE ALPHATRADING APPLICATION

## b) Setting “Confirm order”

Set mode ON to display the Confirm Order screen to check before sending orders to VSDC

### Command Installation

Tick size  Classic  Modern

Confirm Order

Guideline

Set mode OFF to close Confirm Order screen

### Command Installation

Tick size  Classic  Modern

Confirm Order

Guideline

## Confirm Order screen when MODE ON

Expire Date	Ceil	Floor	Ref
30/12/2024	1,413.3	1,228.5	1,320.9

### Confirm order

VN30F2407	Order	Price	Qty
Long	MTL	0	1

# USERGUIDE FOR TRADING DERIVATIVES ON THE ALPHATRADING APPLICATION

## Step 3: Place Orders

To place futures trading orders, please choose the **Trading** tab. On the Trading screen, fill in the order details in the Order Placement Frame.



Confirm Order ON

LO ATO ATC **MTL** MOK

- MTL + - 1 +

**Long**  
( Max: 4931 )

**Short**  
( Max: 4931 )

Fill the order type, volume, and price into the Order Placement section, re-check the contract code, then click the Long/Short button to submit the order..

The maximum trading volume (Purchasing Power) is displayed in the Long/Short (Max) box.

# USERGUIDE FOR TRADING DERIVATIVES ON THE ALPHATRADING APPLICATION

**Note:** You can manually fill the desired price or double-click on the price in the 10-step price increments, on the derivatives price board, or on the ceiling/floor/reference price, The price will automatically be filled into the Order Placement Frame.

The screenshot displays the AlphaTrading application interface. At the top, the time is 14:13. A green button shows 'P/L: 0' with a refresh icon. Below it, the instrument 'VN30F2407' is selected. On the right, the current price is 1,295.7 and the change is -25.2. The main part of the screen is a derivatives price board, which is highlighted with a red border. It shows a list of orders with columns for Bid vol, Bid Price, Ask Price, and Ask vol. The current order is highlighted in green. Below the price board is an order placement frame with a 'Confirm Order ON' status and a close button. The frame includes buttons for 'LO', 'ATO', 'ATC', 'MTL', and 'MOK'. The 'MTL' button is selected. Below these buttons are minus and plus signs for adjusting the order type, and a quantity field set to '1'. At the bottom, there are two large buttons: 'Long (Max: 4931)' in green and 'Short (Max: 4931)' in red.

Bid vol	Bid Price	Ask Price	Ask vol
28	1,295.5	1,295.6	4
47	1,295.3	1,295.7	13
8	1,295.2	1,295.8	6
37	1,295.1	1,295.9	39
124	1,295	1,296	163
8	1,294.9	1,296.1	2
15	1,294.8	1,296.2	3
11	1,294.7	1,296.3	38
7	1,294.6	1,296.4	5
27	1,294.5	1,296.5	270

## **Step 4: Manage Order Book and Derivatives Portfolio & Assets** **a) Modify/Cancel Order**

On the order book, edit order information by selecting the Edit icon and updating details such as volume and price of the order. For rules regarding order



# USERGUIDE FOR TRAINING DERIVATIVES ON THE ALPHATRADING APPLICATION

modification/cancellation, please refer [here](#). Alternatively, in the Order details screen, click the 'Edit Order' button.

15:21

P/L: 1,760,000 ↻ Position >>

T. buy match qty **0/2** T. sell match qty **0/1**

**PENDING** MATCHED HISTORY

Select cancel orders Cancel orders

Contract	Place	Match	Status
<b>VN30F2412</b> Long	2 1,382.2	0	Reserved <span>🗑️</span>
<b>VN30F2412</b> Short	1 MTL	0	Reserved <span>✎</span> <span>🗑️</span>

Home Product Trading **Order** Asset

14:13

< **Order details**

**VN30F2501** **Short**

07/06/2024 09:55:47 Matched

**Summary**

Order ID	<b>11</b>
Order Type	<b>MTL</b>
Ordered Qty	<b>30</b>
Order price	<b>916.2</b>
Matched Avg Prc	<b>916.2</b>
Matched Qty	<b>30</b>
Fee	<b>150,000</b>
Tax	<b>233,633</b>

**Matched details**

Time	Matched Vol	Match Price
10:07:16	<b>6</b>	<b>916.2</b>
10:02:06	<b>2</b>	<b>916.2</b>

# USERGUIDE FOR TRADING DERIVATIVES ON THE ALPHATRADING APPLICATION

You can cancel a single order, multiple orders, or all orders in the order book.

The screenshot shows the Alphatrading application interface. At the top, the time is 9:41. Below the time, there is a red pill-shaped button displaying 'P/L: - 1,000,000,000'. Underneath, there are two boxes: 'T. buy match qty 15/20' and 'T. sell match qty 5/32'. Below these are filter buttons for 'PENDING', 'MATCHED', and 'ALL', along with a funnel icon. A 'Select all' button is highlighted with a red box, and a 'Cancel orders' button is visible to its right. The main part of the screen is a table with columns: Contract, Place, Match, and Status. The table contains several rows of order data for contract VN30F2307.

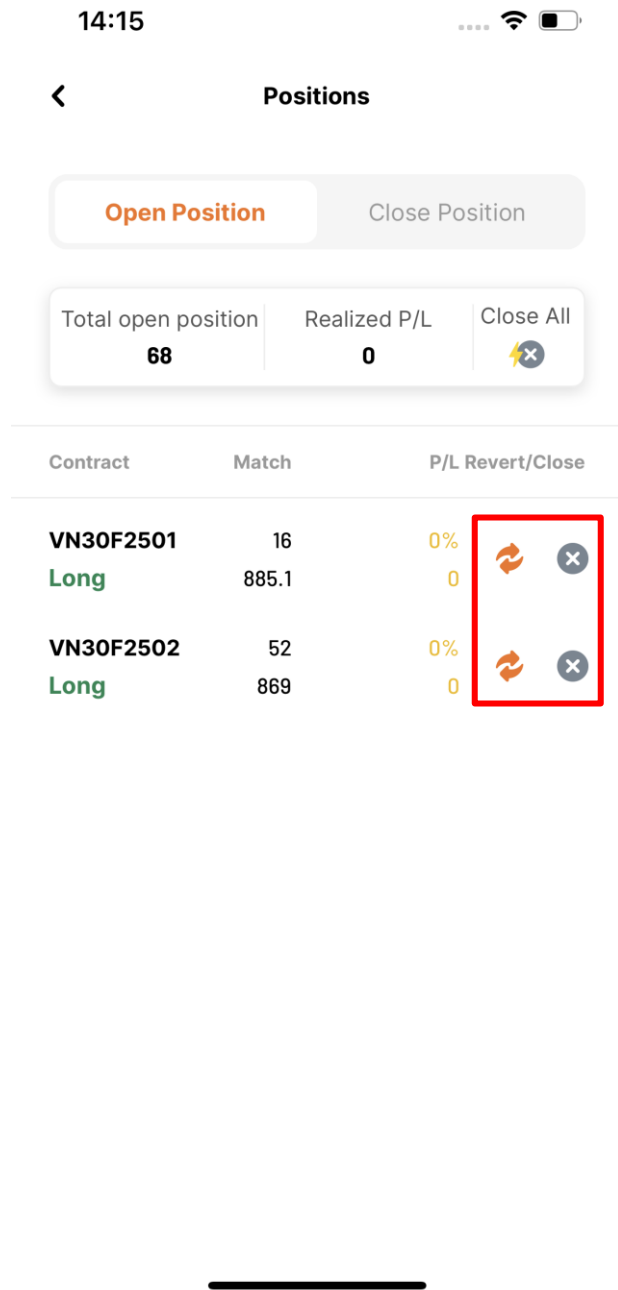
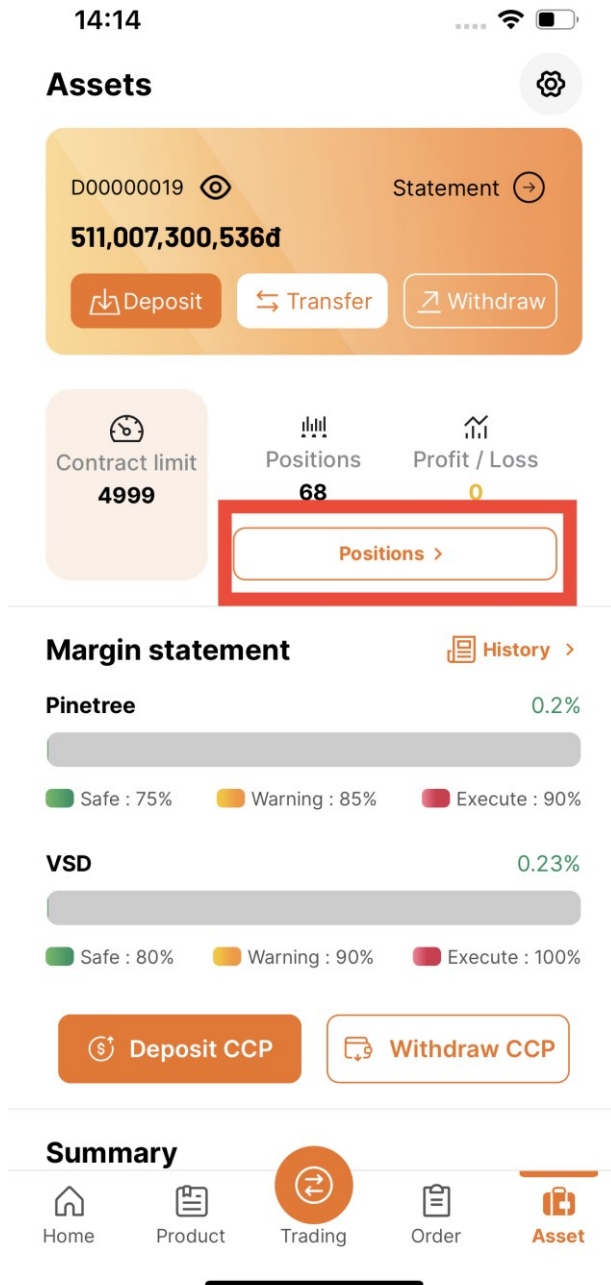
Contract	Place	Match	Status
<input checked="" type="checkbox"/> VN30F2307 Long	100 1125,0	20 1125,4	Pending
VN30F2307 Short	100 1125,0	100 1125,4	Matched
VN30F2307 Short	100 1125,0	20 1125,4	Cancel
<input checked="" type="checkbox"/> VN30F2307 Long	100 1125,0	20 1125,4	Pending
VN30F2307 Short	100 1125,0	100 1125,4	Matched

# USERGUIDE FOR TRAINING DERIVATIVES ON THE ALPHATRADING APPLICATION

## b) Portfolio

On Asset Screen, click on “Positions”

The open position tab displays the openLong/Short positions on the derivatives account. You can place closing/reversing orders using the Close/Reverse icon button.



# USERGUIDE FOR TRAINING DERIVATIVES ON THE ALPHATRADING APPLICATION

The details of closed positions are updated in the Close Position tab.

14:15 ... Wi-Fi 🔋

**Positions** 🔍

Open Position
**Close Position**

No of closed position

**1,755**

Unrealized P/L

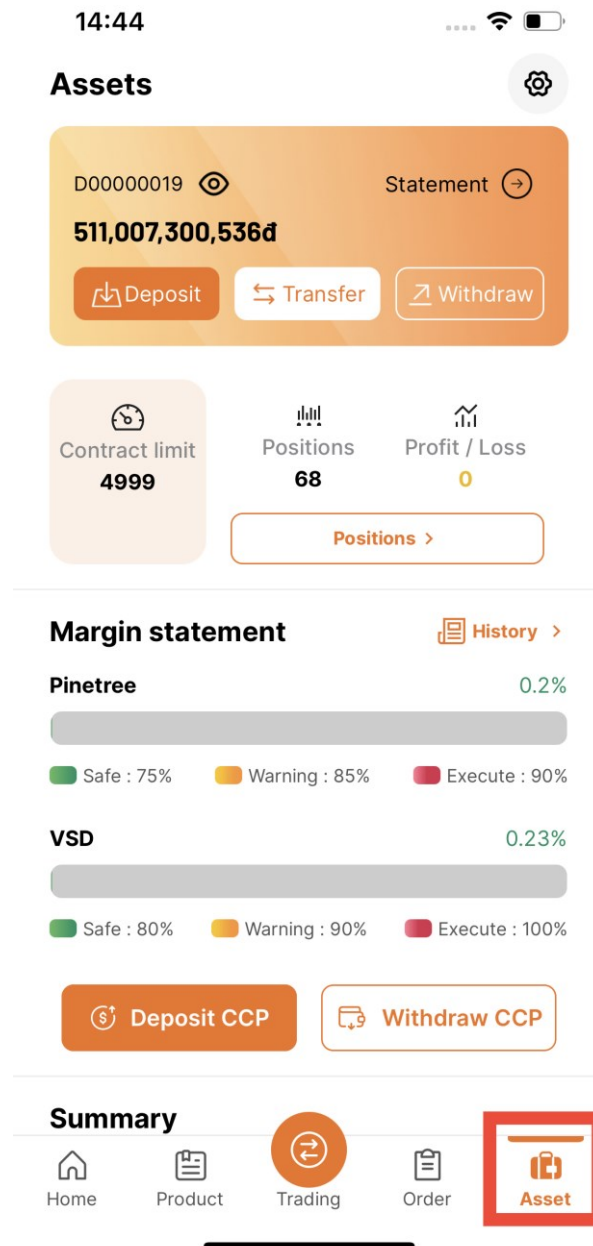
**90,757,938**

Contract	Match	P/L	Close Price
07/06/2024			
<b>VN30F2501</b>	22	0%	916.2
<b>Long</b>	916.2	0	
<b>VN30F2501</b>	20	0%	916.2
<b>Long</b>	916.2	0	
<b>VN30F2501</b>	2	0%	916.2
<b>Long</b>	916.2	0	
<b>VN30F2501</b>	6	0%	916.2
<b>Long</b>	916.2	0	
31/05/2024			
<b>VN30F2501</b>	1	-6.51%	920
<b>Long</b>	984.1	-6,410,000	
<b>VN30F2501</b>	1	0%	915.3
<b>Long</b>	915.3	0	
<b>VN30F2501</b>	1	-0.01%	984

# USERGUIDE FOR TRAINING DERIVATIVES ON THE ALPHATRADING APPLICATION

## c) Asset

Click on the 'Asset' tab on the menu to view detailed asset and track the margin usage ratio.



Besides tracking detailed asset and managing margin usage ratios, you can also perform the following:

- Deposit/withdraw margin money to VSD.
- View account statements, open/close position portfolios.

# USERGUIDE FOR TRAINING DERIVATIVES ON THE ALPHATRADING APPLICATION

## Derivatives Account Report

You can check the profit and loss statement of your derivatives account, or the cash statement. Select From date/To date to choose the desired reporting period

### Report Loss / Profit

### Statements

14:44
.... 📶 🔋

<
**Statements**

P/L report

Statement

14/06/2024 📅

24/06/2024 📅

----- 24/06/2024 -----

VN30F2501	Total P/L 0
<b>Holding position</b>	P/L 0
Qty	Cost
Closing price	Closing price
<b>16 Long</b>	<b>885.1</b>
<b>885.1</b>	<b>885.1</b>

VN30F2502	Total P/L 0
<b>Holding position</b>	P/L 0
Qty	Cost
Closing price	Closing price
<b>52 Long</b>	<b>869</b>
<b>869</b>	<b>869</b>

----- 23/06/2024 -----

VN30F2501	Total P/L 0
<b>Holding position</b>	P/L 0
Qty	Cost
Closing price	Closing price
<b>16 Long</b>	<b>885.1</b>
<b>885.1</b>	<b>0</b>

VN30F2502	Total P/L 0
-----------	-------------

14:15
.... 📶 🔋

<
**Positions**
🔍

Open Position

Close Position

No of closed position	Unrealized P/L
<b>1,755</b>	<b>90,757,938</b>

Contract	Match	P/L	Close Price
07/06/2024			
VN30F2501	22	0%	916.2
<b>Long</b>	916.2	0	
VN30F2501	20	0%	916.2
<b>Long</b>	916.2	0	
VN30F2501	2	0%	916.2
<b>Long</b>	916.2	0	
VN30F2501	6	0%	916.2
<b>Long</b>	916.2	0	
31/05/2024			
VN30F2501	1	-6.51%	920
<b>Long</b>	984.1	-6,410,000	
VN30F2501	1	0%	915.3
<b>Long</b>	915.3	0	
VN30F2501	1	-0.01%	984

# USERGUIDE FOR TRAINING DERIVATIVES ON THE ALPHATRADING APPLICATION

You can also review your deposit and withdrawal history by selecting the 'History' button on the Derivatives Assets screen.

