

GLOBAL MARKET

		1D	YTD
DJIA	49,412.40	0.64%	2.81%
S&P500	6,950.23	0.50%	1.53%
NASDAQ	23,601.36	0.43%	1.55%
VIX	16.15	0.37%	8.03%
FTSE 100	10,148.85	0.05%	2.19%
DAX	24,933.08	0.13%	1.81%
CAC40	8,131.15	-0.15%	-0.23%
Brent oil (\$/barrel)	64.90	-0.23%	6.83%
Gold (\$/ounce)	5,040.20	1.29%	16.39%

Stocks kicked off the week strong, aided by gains in major technology names. President Donald Trump said late Monday that he would raise tariffs on South Korean autos, pharmaceuticals and lumber from 15% to 25%. He cited a delay in South Korea's legislature approving a trade deal the nation had reached with the U.S. last summer.

VIETNAM ECONOMY

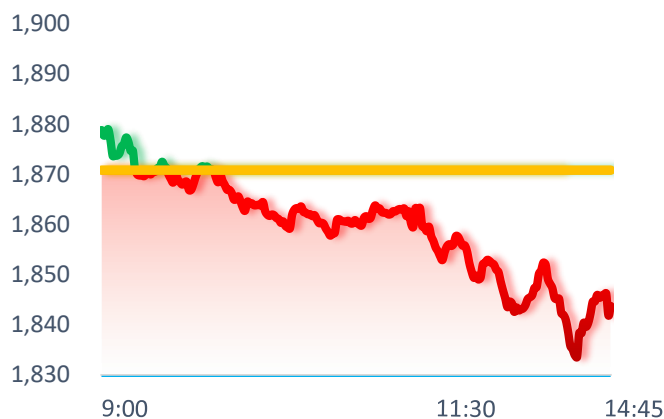
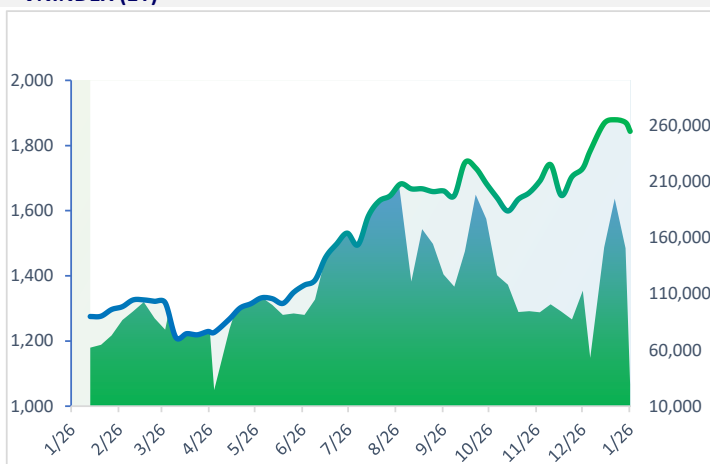
		1D (bps)	YTD (bps)
Vnibor	5.60%	80	-250
Deposit interest 12M	5.20%	0	60
5 year-Gov. Bond	3.61%	2.0	25
10 year-Gov. Bond	4.00%	2.4	9
USD/VND	26,368	-0.05%	-0.03%
EUR/VND	31,865	0.82%	0.67%
CNY/VND	3,826	-0.08%	0.11%

The price of gold reached a record high on Monday, surging above USD5,000 an ounce, as investors sought a safe haven amid heightened geopolitical tensions and rising global risks. Silver prices also rose yesterday, up about 8% to USD110 an ounce.

VIETNAM STOCK MARKET

		1D	YTD
VN-INDEX	1,843.72	-1.45%	3.32%
HNX	247.30	-2.24%	-0.59%
VN30	2,032.28	-2.19%	0.08%
UPCOM	126.56	-0.40%	4.62%
Net Foreign buy (B)	155.15		
Total trading value (B)	34,907.15	8.04%	43.67%

On January 26, VN-Index adjusted for the 5th consecutive session, despite a sharp increase in stocks of state-owned enterprises. Proprietary trading net bought VND 357 billion, mainly including ACB VND 78 billion, MWG VND 74 billion, MBB VND 57 billion,...

VNINDEX - INTRADAY

VNINDEX (1Y)

SELECTED NEWS

The Prime Minister requested the operation of the gold exchange in February;
Bac Ninh ranks second in the country in terms of FDI attraction;
The Prime Minister asked for a solution to increase housing supply soon;
Speculation about exchange rate intervention signals from Japan;
Mr. Trump threatens to impose 100% tariffs on Canada;
The snowstorm that swept the United States caused more than 8,000 flights to be canceled.

EVENT CALENDAR

Ticker	Ex-right Date	Last register Date	Exercise Date	Type	Rate	Value
DPH	1/27/2026	1/28/2026	2/6/2026	Cash	20%	2,000
ITD	1/30/2026	2/2/2026	2/12/2026	Cash	10%	1,000
SEB	2/2/2026	2/3/2026	2/10/2026	Cash	9%	900

PINETREE SECURITIES CORPORATION